



## Earth Moving Used Komatsu PC270 Excavator 27.46t For Heavy Duty Applications

### Our Product Introduction

more products please visit us on [used-excavatormachine.com](http://used-excavatormachine.com)

#### Basic Information

- Place of Origin: Japan
- Brand Name: Used Komatsu Excavator
- Model Number: 270
- Minimum Order Quantity: 1set
- Price: Negotiable
- Packaging Details: Container Or Bulk
- Delivery Time: 5-8 work days
- Payment Terms: L/C, D/A, D/P, T/T, Western Union, MoneyGram
- Supply Ability: 100 units per month



#### Product Specification

- Swing Hydraulic Circuit: 28.9Mpa
- Operating Weight: 25.25t
- Model: PC270
- Maximum Output Power: 123kW
- Maximum Main Pump Flow: 439 L/min
- Maximum Excavation Depth: 6920mm
- Engine Oil Change Volume: 23.1L
- Coolant: 19.9L
- Highlight: Second Hand Komatsu PC270 Excavator , Heavy Duty Used Komatsu Excavator, Earth Moving Used Komatsu Excavator



## Product Description

### Used Komatsu Excavator: High Performance And Low Cost

#### Product Description:

Komatsu Construction Excavator is the perfect choice for earth moving and construction projects. This model features a Komatsu SAA6D107E-1 engine, 5.5/4.2/3.1Km/h travel speed, 1.2 cubic meters bucket capacity, 439 L/min maximum main pump flow, and 37.3Mpa travel hydraulic circuit. With its versatility, power, and reliability, this Komatsu Earth Moving Excavator is ideal for taking on any project. The Komatsu Hydraulic Excavator delivers superior performance in any construction or earth moving project, while minimizing downtime and fuel costs. With its high performance design, this industrial-grade excavator is up to any task.

#### Features:

**Product Name:** Used Komatsu Excavator

**Engine:** Komatsu SAA6D107E-1

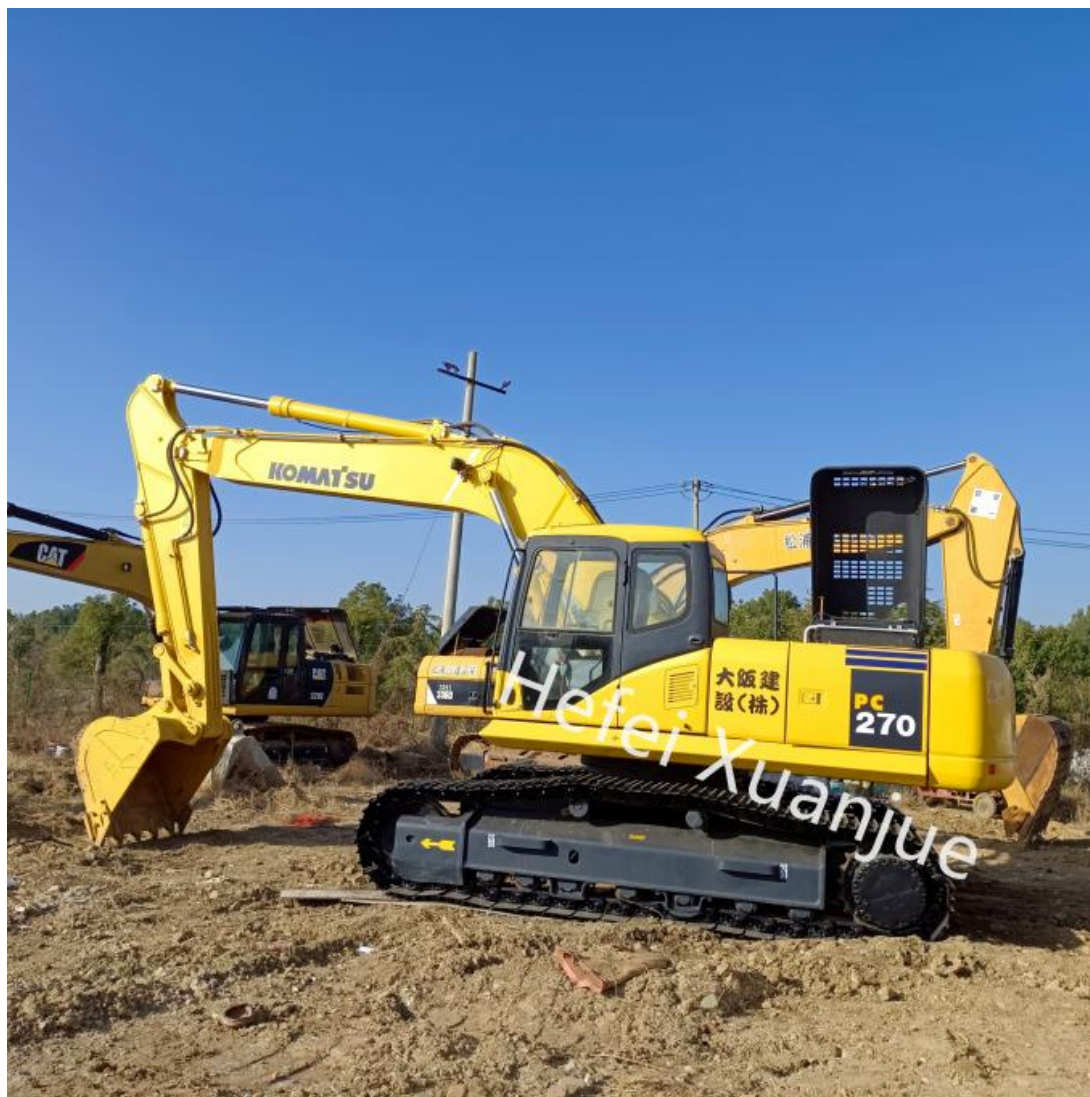
**Location:** China

**Bucket Capacity:** 1.2 Cubic Meters

**Maximum Excavation Depth:** 6920mm

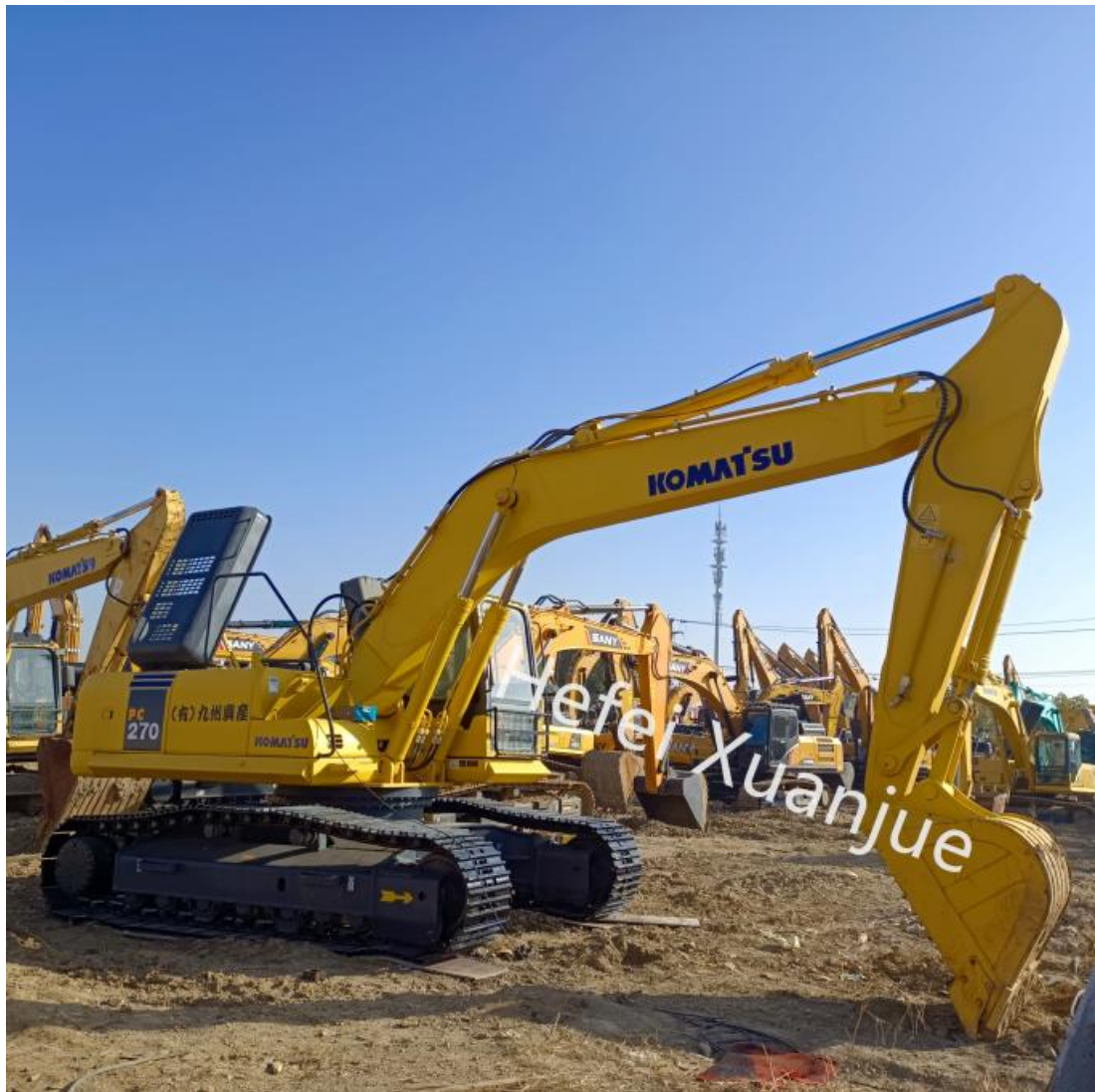
**Maximum Main Pump Flow:** 439 L/min

**Keywords:** Komatsu Heavy Equipment Excavator, Komatsu Hydraulic Excavator, Komatsu Heavy Equipment Excavator











**Technical Parameters:**

| Parameter                | Value               |
|--------------------------|---------------------|
| Model                    | PC270               |
| Bucket Capacity          | 1.2 Cubic Meters    |
| Maximum Excavation Depth | 6920mm              |
| Fuel Tank Capacity       | 400L                |
| Coolant                  | 19.9L               |
| Maximum Main Pump Flow   | 439 L/min           |
| Bucket Digging Force     | 172kN               |
| Engine Oil Change Volume | 23.1L               |
| Travel Hydraulic Circuit | 37.3Mpa             |
| Engine                   | Komatsu SAA6D107E-1 |

**Applications:**

Used Komatsu Excavator is a powerful and reliable excavator model, ideal for a variety of earth-moving applications. This used Komatsu PC270 Digging Excavator model features a Komatsu SAA6D107E-1 engine with a maximum output of 123kW and a fuel tank capacity of 400L, allowing for long shifts and heavy-duty excavation projects. The Komatsu PC270 provides a bucket digging force of 172kN, making it a reliable choice for a wide range of earth-moving operations. This Komatsu Digging Excavator is a perfect choice for construction, demolition, and other earth-moving applications. It is a reliable and efficient choice for any earth-moving job, ensuring that projects are completed on time and on budget.

**Packing and Shipping:**

The Used Komatsu Excavator will be securely packaged and shipped to its destination. The excavator will be wrapped in a sturdy protective material and placed in a heavy-duty, corrugate box with sufficient cushioning material to prevent

shifting during transit. The box will be labeled with the product name, address of the recipient, and other necessary information. The box will be placed in a larger shipping container to ensure that it is not damaged during shipping and will be shipped using a reliable and reputable shipping company.

**FAQ:**

**Xuanjue Serve For You, Best Quality And Lowest Price**

Q & A

**Q1: What is the brand name of Used Komatsu Excavator?**

A1: The brand name is Used Komatsu Excavator.

**Q2: What is the model number of Used Komatsu Excavator?**

A2: The model number is 270.

**Q3: Where is the origin of Used Komatsu Excavator?**

A3: The origin is Japan.

**Q4: What are the features of Used Komatsu Excavator?**

A4: The Used Komatsu Excavator features excellent performance, high efficiency, and long service life.

**Q5: What kind of warranty is offered for Used Komatsu Excavator?**

A5: We provide professional technical support and guidance for Used Komatsu Excavator. Any quality issue can be solved within the warranty period.

If you have any questions, you can call and send an email at any time and leave a message. We will answer you as soon as possible after seeing it.



**Hefei Xuanjue Construction Machinery Co., Ltd.**



13385604601



[used-excavatormachine.com](http://used-excavatormachine.com)

Sanshitou,Xinzhan District,Feidong County,Hefei City,Anhui Province,China